

# For Sale | Industrial

## 390 Moffit Blvd, Islip, NY



Building Size:	9,708 sf ±
Lot Size:	0.25 acres ±
Offices:	10% ±
Ceiling Height:	Multiple Heights (21' at peak)
Drive-Ins:	6
Heat:	Gas
Power:	200 amps
Sale Price:	\$1,900,000.00
Taxes:	\$22,481.57 / year ±



- Fully Renovated in 2023
- Airlines throughout
- Fenced in yard with 2 access points
- Camera System throughout
- Former lumber yard / plumbing supply house
- Just off Route 111
- Zoned Industrial 1 in Town of Islip

- New:**
- Siding
  - HVAC
  - Parking Lot
  - Bathrooms (4)
  - Doors
  - Lighting
  - Office
  - Insulation
  - Gate
  - Cameras

**METRO**  
REALTY SERVICES LLC  
201 Moreland Road, Ste 4, Hauppauge, NY 11788  
(631) 770-0700 ~ [info@metrorealtyservices.com](mailto:info@metrorealtyservices.com)  
[www.metrorealtyservices.com](http://www.metrorealtyservices.com)

### **Exclusive Agent:**

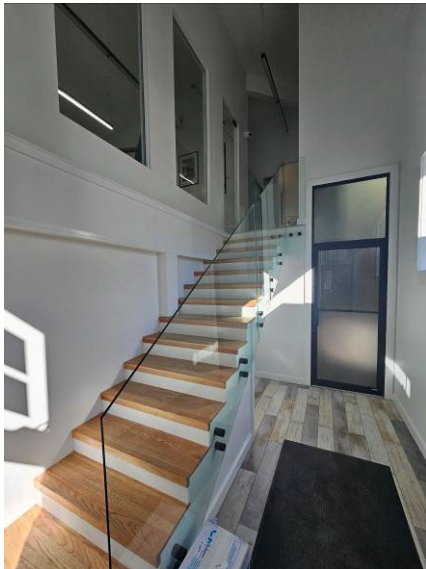
Jeremy D. Hackett, Managing Partner  
Licensed Real Estate Broker  
Direct: (631) 391-6359  
[jeremy@metrorealtyservices.com](mailto:jeremy@metrorealtyservices.com)

Michael F. Pisciotta  
Licensed Real Estate Salesperson  
Direct: (631) 872-1180  
[mike@metrorealtyservices.com](mailto:mike@metrorealtyservices.com)

All information submitted is subject to errors, omissions, change of price or rental, change of other terms and conditions, prior sale, lease, financing or withdrawal without notice. All areas and dimensions are approximate. This advertisement does not suggest that the broker has a listing on this property or properties or that any property is currently available.

# For Sale | Industrial

## 390 Moffit Blvd, Islip, NY



**METRO**  
REALTY SERVICES LLC  
201 Moreland Road, Ste 4, Hauppauge, NY 11788  
(631) 770-0700 ~ [info@metrorealtyservices.com](mailto:info@metrorealtyservices.com)  
[www.metrorealtyservices.com](http://www.metrorealtyservices.com)

### Exclusive Agent:

Jeremy D. Hackett, Managing Partner  
Licensed Real Estate Broker  
Direct: (631) 391-6359  
[jeremy@metrorealtyservices.com](mailto:jeremy@metrorealtyservices.com)

Michael F. Pisciotta  
Licensed Real Estate Salesperson  
Direct: (631) 872-1180  
[mike@metrorealtyservices.com](mailto:mike@metrorealtyservices.com)

All information submitted is subject to errors, omissions, change of price or rental, change of other terms and conditions, prior sale, lease, financing or withdrawal without notice. All areas and dimensions are approximate. This advertisement does not suggest that the broker has a listing on this property or properties or that any property is currently available.



For Sale | Industrial  
390 Moffit Blvd, Islip, NY



**METRO**  
REALTY SERVICES LLC  
201 Moreland Road, Ste 4, Hauppauge, NY 11788  
(631) 770-0700 ~ [info@metrorealtyservices.com](mailto:info@metrorealtyservices.com)  
[www.metrorealtyservices.com](http://www.metrorealtyservices.com)

**Exclusive Agent:**

Jeremy D. Hackett, Managing Partner  
Licensed Real Estate Broker  
Direct: (631) 391-6359  
[jeremy@metrorealtyservices.com](mailto:jeremy@metrorealtyservices.com)

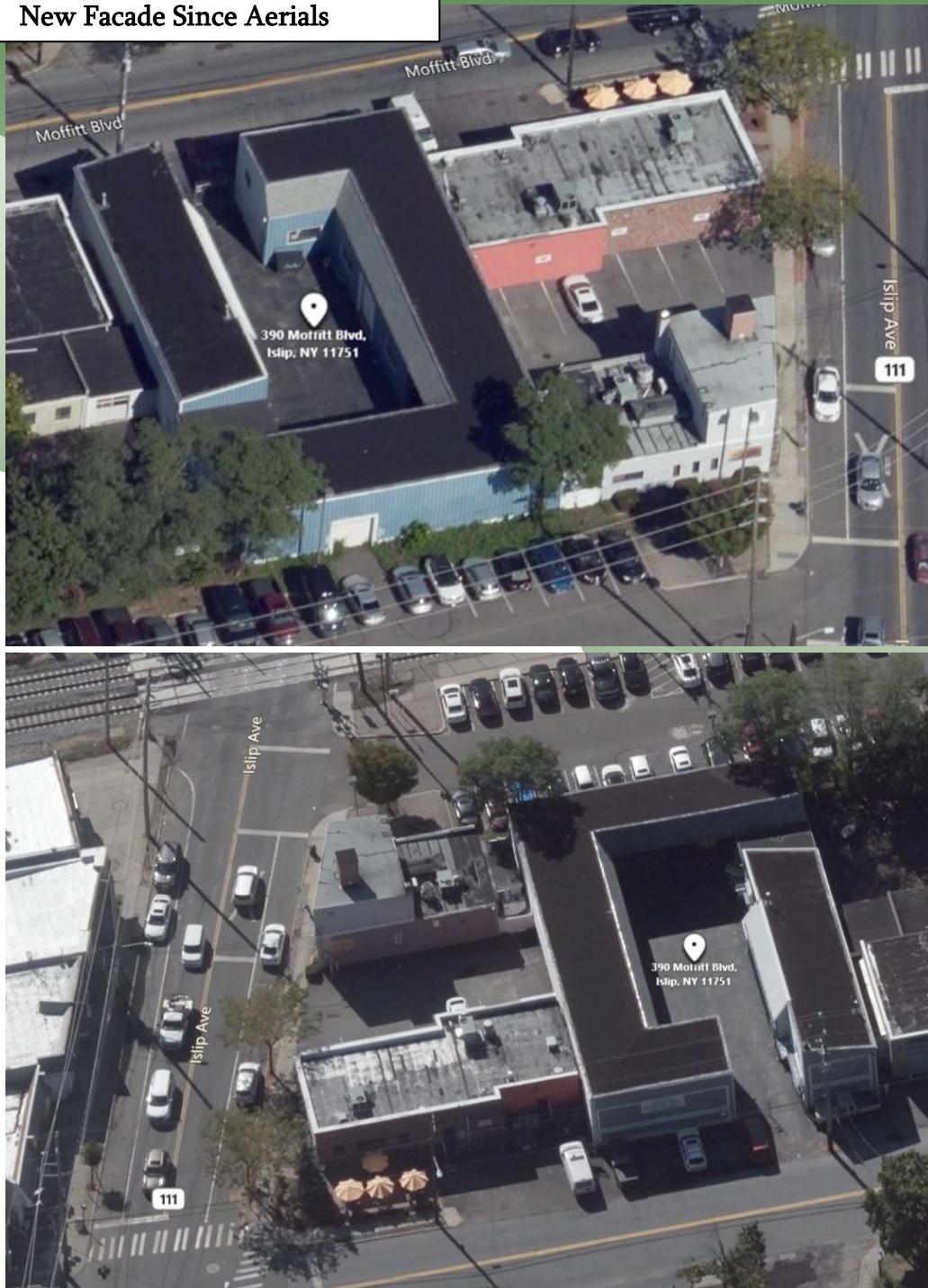
Michael F. Pisciotta  
Licensed Real Estate Salesperson  
Direct: (631) 872-1180  
[mike@metrorealtyservices.com](mailto:mike@metrorealtyservices.com)

All information submitted is subject to errors, omissions, change of price or rental, change of other terms and conditions, prior sale, lease, financing or withdrawal without notice.  
All areas and dimensions are approximate. This advertisement does not suggest that the broker has a listing on this property or properties or that any property is currently available.

# For Sale | Industrial

## 390 Moffit Blvd, Islip, NY

### New Facade Since Aerials



**METRO**  
REALTY SERVICES LLC  
201 Moreland Road, Ste 4, Hauppauge, NY 11788  
(631) 770-0700 ~ [info@metrorealtyservices.com](mailto:info@metrorealtyservices.com)  
[www.metrorealtyservices.com](http://www.metrorealtyservices.com)

#### Exclusive Agent:

Jeremy D. Hackett, Managing Partner  
Licensed Real Estate Broker  
Direct: (631) 391-6359  
[jeremy@metrorealtyservices.com](mailto:jeremy@metrorealtyservices.com)

Michael F. Pisciotta  
Licensed Real Estate Salesperson  
Direct: (631) 872-1180  
[mike@metrorealtyservices.com](mailto:mike@metrorealtyservices.com)

All information submitted is subject to errors, omissions, change of price or rental, change of other terms and conditions, prior sale, lease, financing or withdrawal without notice. All areas and dimensions are approximate. This advertisement does not suggest that the broker has a listing on this property or properties or that any property is currently available.



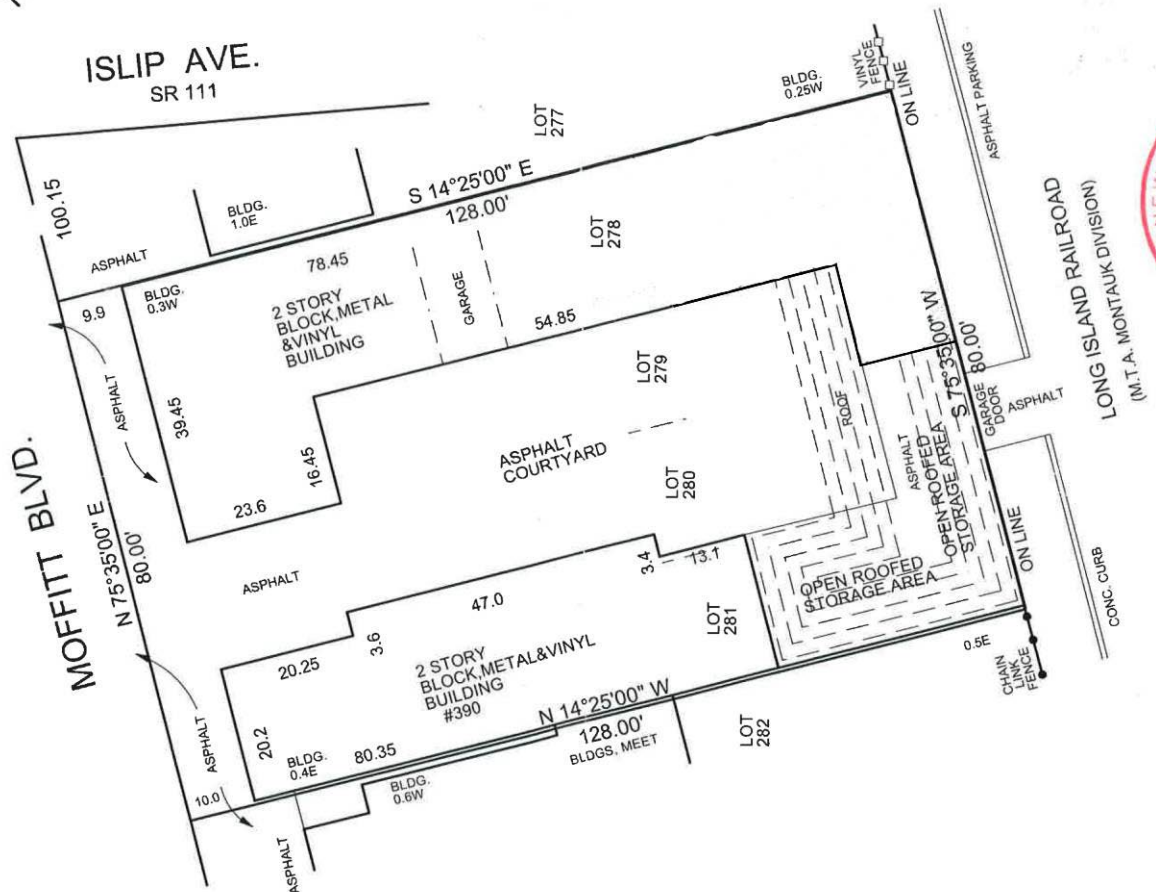
# For Sale | Industrial

## 390 Moffit Blvd, Islip, NY

SCALE 1"=20'



LOTS 278, 279, 280, 281  
FIRST AMENDED MAP OF  
COLUMBUS  
PARK NO. 4  
FILED APRIL 3, 1928 NO. 873  
AT ISLIP  
TOWN OF ISLIP  
SUFFOLK CO. N.Y.



**METRO**  
REALTY SERVICES LLC  
201 Moreland Road, Ste 4, Hauppauge, NY 11788  
(631) 770-0700 ~ info@metrorealtyservices.com  
www.metrorealtyservices.com

### Exclusive Agent:

Jeremy D. Hackett, Managing Partner  
Licensed Real Estate Broker  
Direct: (631) 391-6359  
[jeremy@metrorealtyservices.com](mailto:jeremy@metrorealtyservices.com)

Michael F. Pisciotta  
Licensed Real Estate Salesperson  
Direct: (631) 872-1180  
[mike@metrorealtyservices.com](mailto:mike@metrorealtyservices.com)

All information submitted is subject to errors, omissions, change of price or rental, change of other terms and conditions, prior sale, lease, financing or withdrawal without notice. All areas and dimensions are approximate. This advertisement does not suggest that the broker has a listing on this property or properties or that any property is currently available.