

For Sale or Lease | Industrial

110 Cherry Valley Rd, West Hempstead, NY



Building Size: 11,575 sf \pm

Lot Size: .87 acres \pm

Offices: 20% \pm

Ceiling Ht: 16' \pm

Loading: 3 Drive-ins (14')

Heat: Gas (Plus waste oil heater in shop)

Power: 600 amps

- Two Separate Lots
- Currently used as a construction yard
- Fully Sprinklered
- LED Lighting
- Town of Hempstead
- Zoned Industrial "Y"
- Section 33, Block 614, Lots 63 & 64
(11,575 sf on .46 acres & .41 acre yard)

Asking Sale Price: \$ 4,995,000 (Includes Both Lots)

Lease Price: \$30,000 / month gross (\$18 psf for Building & \$8.75 psf for Land)

Taxes: \$ 51,404.86 / year \pm (\$4.44 psf)

METRO

REALTY SERVICES LLC

201 Moreland Road, Ste 4, Hauppauge, NY 11788

(631) 770-0700 ~ info@metrorealtyservices.com

www.metrorealtyservices.com

Exclusive Agent:

Jeremy D. Hackett

Licensed Real Estate Broker

Managing Partner

Direct: (631) 391-6359

jeremy@metrorealtyservices.com

Exclusive Agent:

Andrew Blumenthal

Licensed Real Estate Broker

Managing Partner

Direct: (631) 391-6363

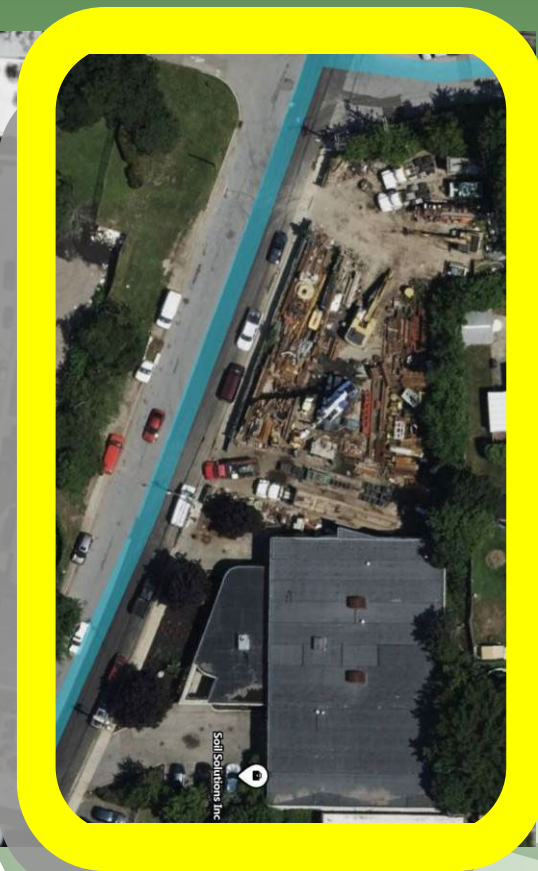
andy@metrorealtyservices.com

All information submitted is subject to errors, omissions, change of price or rental, change of other terms and conditions, prior sale, lease, financing or withdrawal without notice. All areas and dimensions are approximate. This advertisement does not suggest that the broker has a listing on this property or properties or that any property is currently available.

5/7/2025

For Sale or Lease | Industrial

110 Cherry Valley Rd, West Hempstead, NY



METRO

REALTY SERVICES LLC

201 Moreland Road, Ste 4, Hauppauge, NY 11788

(631) 770-0700 ~ info@metrorealtyservices.com

www.metrorealtyservices.com

Exclusive Agent:

Jeremy D. Hackett

Licensed Real Estate Broker

Managing Partner

Direct: (631) 391-6359

jeremy@metrorealtyservices.com

Exclusive Agent:

Andrew Blumenthal

Licensed Real Estate Broker

Managing Partner

Direct: (631) 391-6363

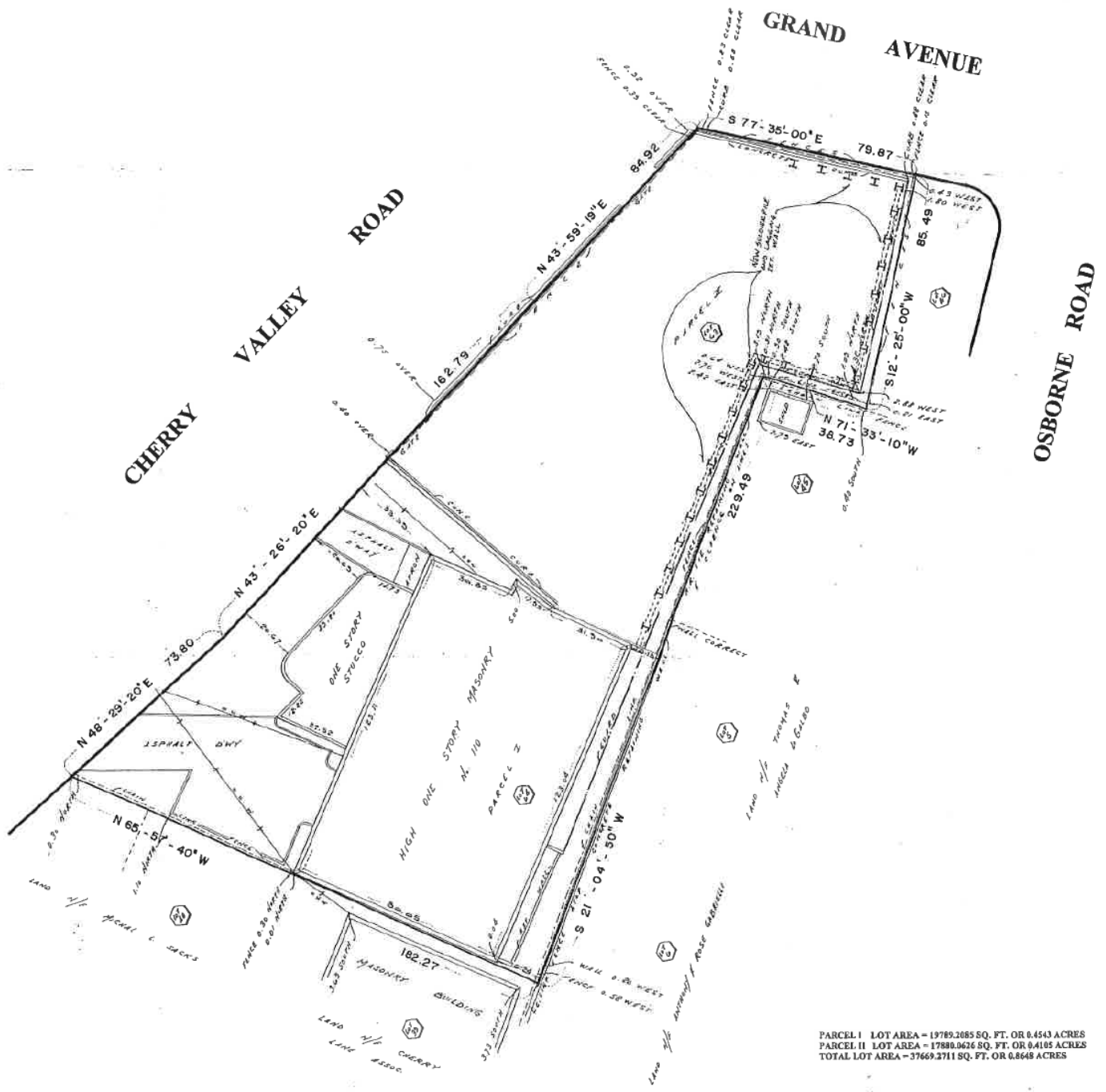
andy@metrorealtyservices.com

All information submitted is subject to errors, omissions, change of price or rental, change of other terms and conditions, prior sale, lease, financing or withdrawal without notice. All areas and dimensions are approximate. This advertisement does not suggest that the broker has a listing on this property or properties or that any property is currently available.

5/7/2025

For Sale or Lease | Industrial

110 Cherry Valley Rd, West Hempstead, NY



METRO

REALTY SERVICES LLC

201 Moreland Road, Ste 4, Hauppauge, NY 11788

(631) 770-0700 ~ info@metrorealtyservices.com

www.metrorealtyservices.com

Exclusive Agent:

Jeremy D. Hackett

Licensed Real Estate Broker

Managing Partner

Direct: (631) 391-6359

jeremy@metrorealtyservices.com

Exclusive Agent:

Andrew Blumenthal

Licensed Real Estate Broker

Managing Partner

Direct: (631) 391-6363

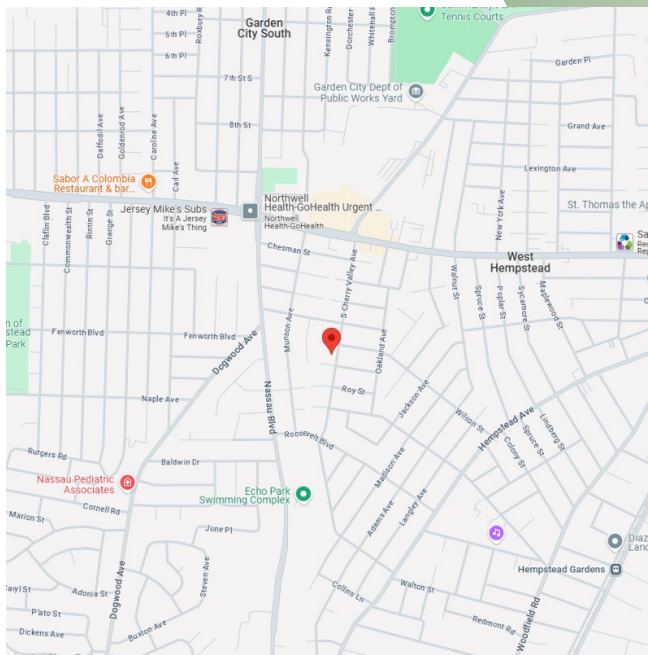
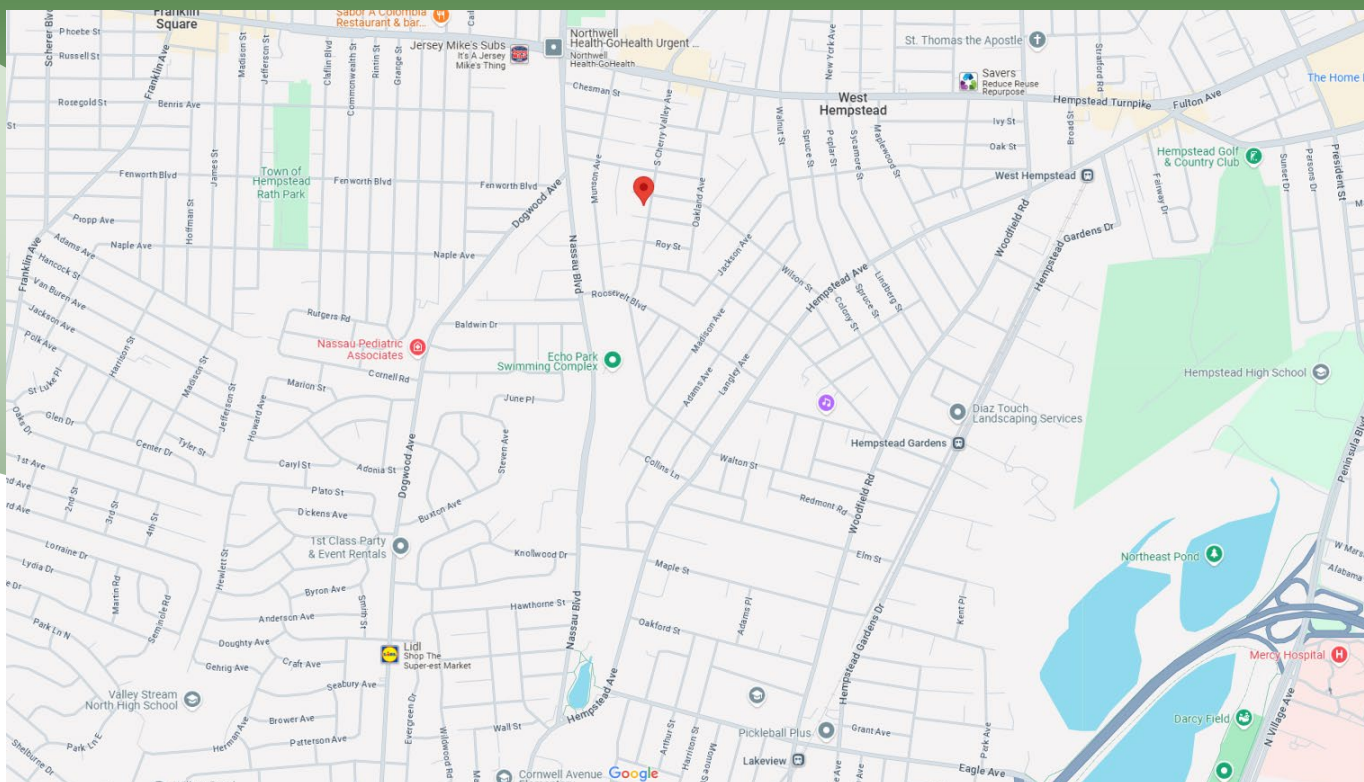
andy@metrorealtyservices.com

All information submitted is subject to errors, omissions, change of price or rental, change of other terms and conditions, prior sale, lease, financing or withdrawal without notice. All areas and dimensions are approximate. This advertisement does not suggest that the broker has a listing on this property or properties or that any property is currently available.

5/7/2025

For Sale or Lease | Industrial

110 Cherry Valley Rd, West Hempstead, NY



201 Moreland Road, Ste 4, Hauppauge, NY 11788
(631) 770-0700 ~ info@metrorealtyservices.com
www.metrorealtyservices.com

Exclusive Agent:

Jeremy D. Hackett
Licensed Real Estate Broker
Managing Partner
Direct: (631) 391-6359
jeremy@metrorealtyservices.com

Exclusive Agent:

Andrew Blumenthal
Licensed Real Estate Broker
Managing Partner
Direct: (631) 391-6363
andy@metrorealtyservices.com

All information submitted is subject to errors, omissions, change of price or rental, change of other terms and conditions, prior sale, lease, financing or withdrawal without notice. All areas and dimensions are approximate. This advertisement does not suggest that the broker has a listing on this property or properties or that any property is currently available.

5/7/2025