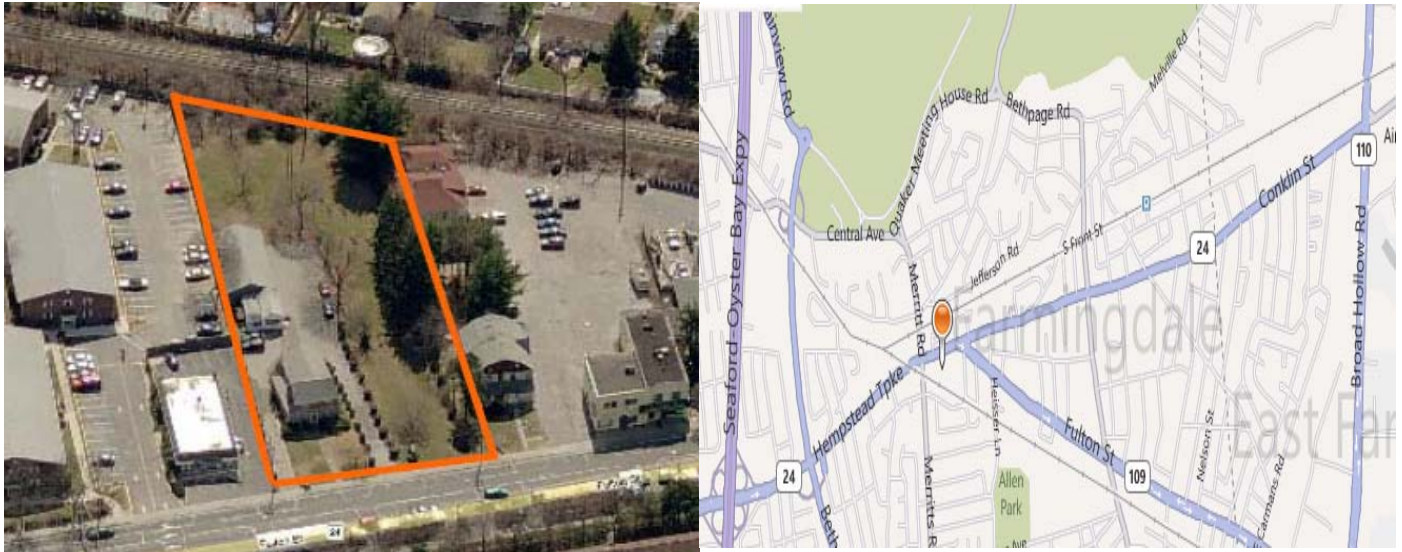


*As "Exclusive Agents" we are pleased to announce the availability of the following property:*



## 190 Fulton Street (Route 24), Farmingdale, NY

**Lot Size:** 1.02 Acres (115' Frontage)  
**Zoning:** Business DD, Village of Farmingdale  
**Features:** 3 Family Apartment House With Multiple Parking Garage  
**Sewers:** Yes  
**Coverage:** 35%  
**Sale Price:** \$995,000  
**Taxes:** \$16,746.40

### Comments:

- ✚ Ideal Redevelopment Site
- ✚ Traffic Count + 41,000 per day
- ✚ Adjacent 1.05 acres available Totaling 265' Frontage

For further information or to arrange an inspection of this property please contact:

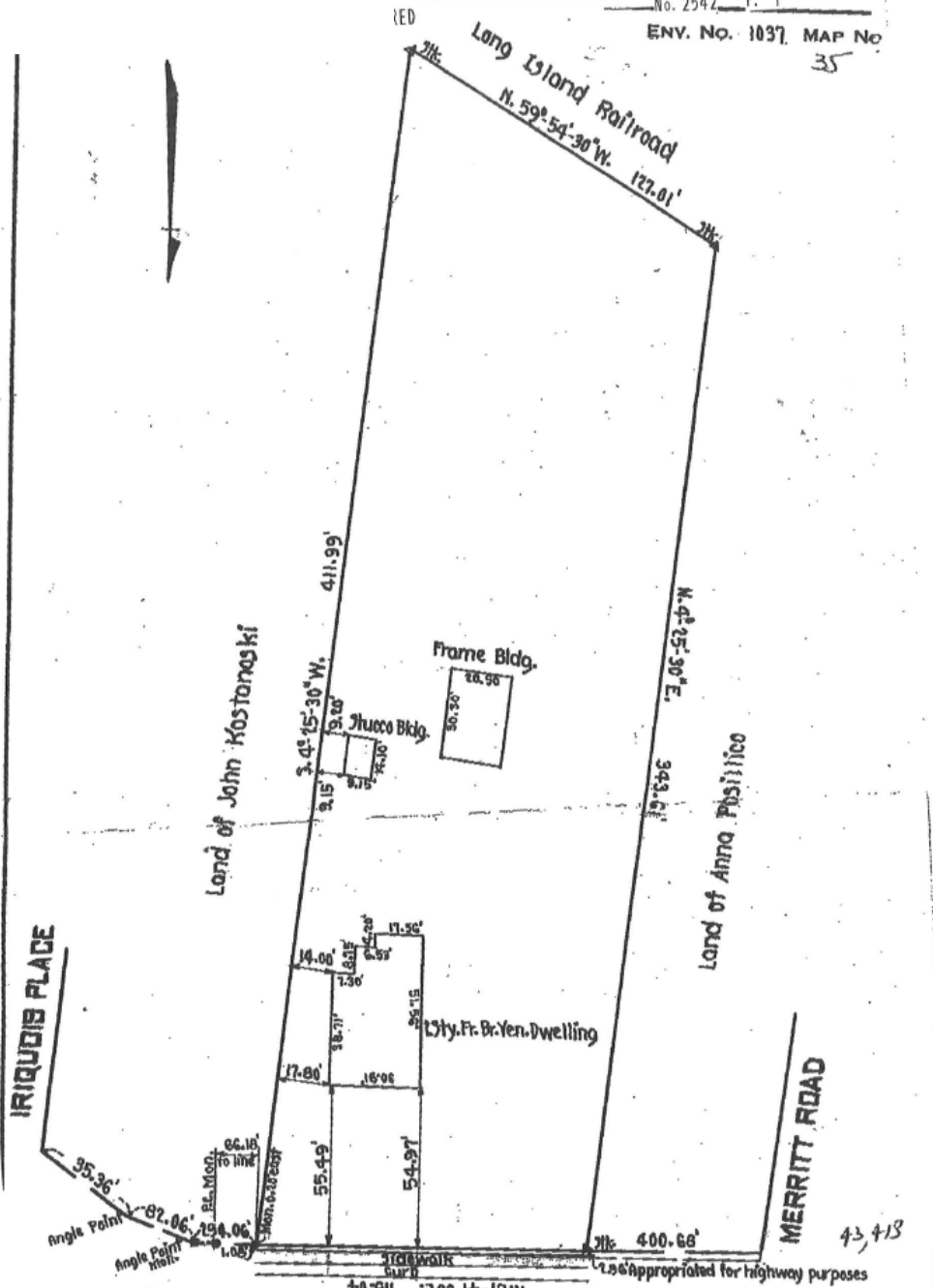
Nick Romano  
Managing Partner  
(631) 770-0700 ext. 22  
[nick@metrorealtyservices.com](mailto:nick@metrorealtyservices.com)

Mort Glick  
Senior Managing Director  
(631) 770-0700 ext. 17  
[mort@metrorealtyservices.com](mailto:mort@metrorealtyservices.com)

Tel: (631) 770-0700 ~ INDUSTRIAL ~ COMMERCIAL ~ OFFICE ~ MANAGEMENT ~ Fax: (631) 770-0710  
E-mail: [info@metrorealtyservices.com](mailto:info@metrorealtyservices.com) ~ Website: [www.metrorealtyservices.com](http://www.metrorealtyservices.com)



No. 2547  
ENV. NO. 1037, MAP No 35



**CONKLIN STREET**  
(conc. Pavement)

HAROLD R. BAUSCH

LICENSED SURVEYOR, LICENSE No. 11934

45 MEROKEE PLACE

FARMINGDALE, N. Y.

SURVEYED FOR ANTHONY AND ELEANORA PORRECA

DATE AUGUST 1, 1950

MAP OF: PROPERTY SITUATED IN FARMINGDALE, NASSAU CO., N.Y.

LOTS NO.

BLOCK No.

GUARANTEED TO:

SCALE 1 INCH EQUALS 40 FEET

FIELD BOOK No.

All information submitted is subject to errors omissions, change of other terms and conditions, prior sale, lease, financing or withdrawal without notice. All areas and dimensions are approximate.