

Two Suites Remaining
— 885/SF & 3,730/SF —

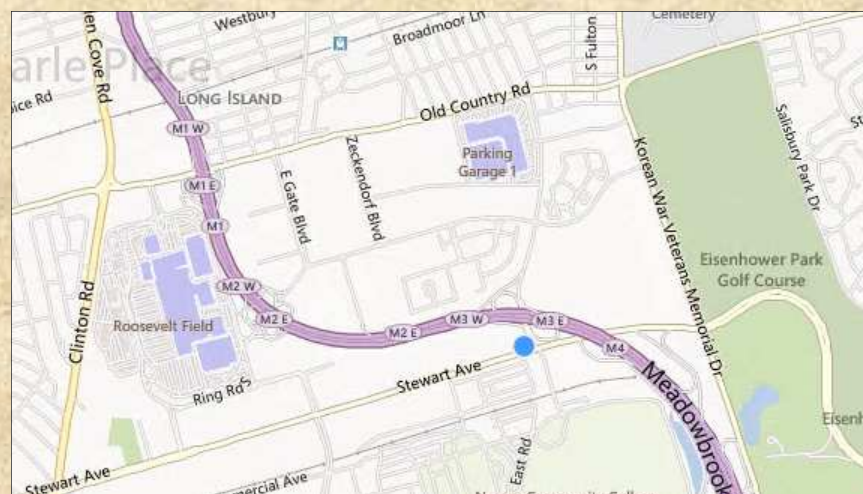
1103 Stewart Avenue
Garden City, NY



35,000/SF Class A 3-Story

High-End Medical/Professional Office Building

- Ideally situated at corner of Stewart Avenue & Merchants Concourse & at Exit M3 of Meadowbrook Parkway
- High volume traffic counts & excellent exposure on both roads
- 4 cars per 1000/SF on-site parking with covered deck
- Serviced by Public Transportation - Bus Lines N16, N35 & N45
- 24.7 building access
- Located on Long Island's "Fibre Loop"



METRO
REALTY SERVICES LLC

MORTON H. GLICK

Associate Licensed Real Estate Broker

Senior Managing Director

631-770-0700 ♦ 631-770-0710—Fax

mort@metrorealtyservices.com

201 Moreland Road, Suite 4, Hauppauge, NY 11788

- INDUSTRIAL -

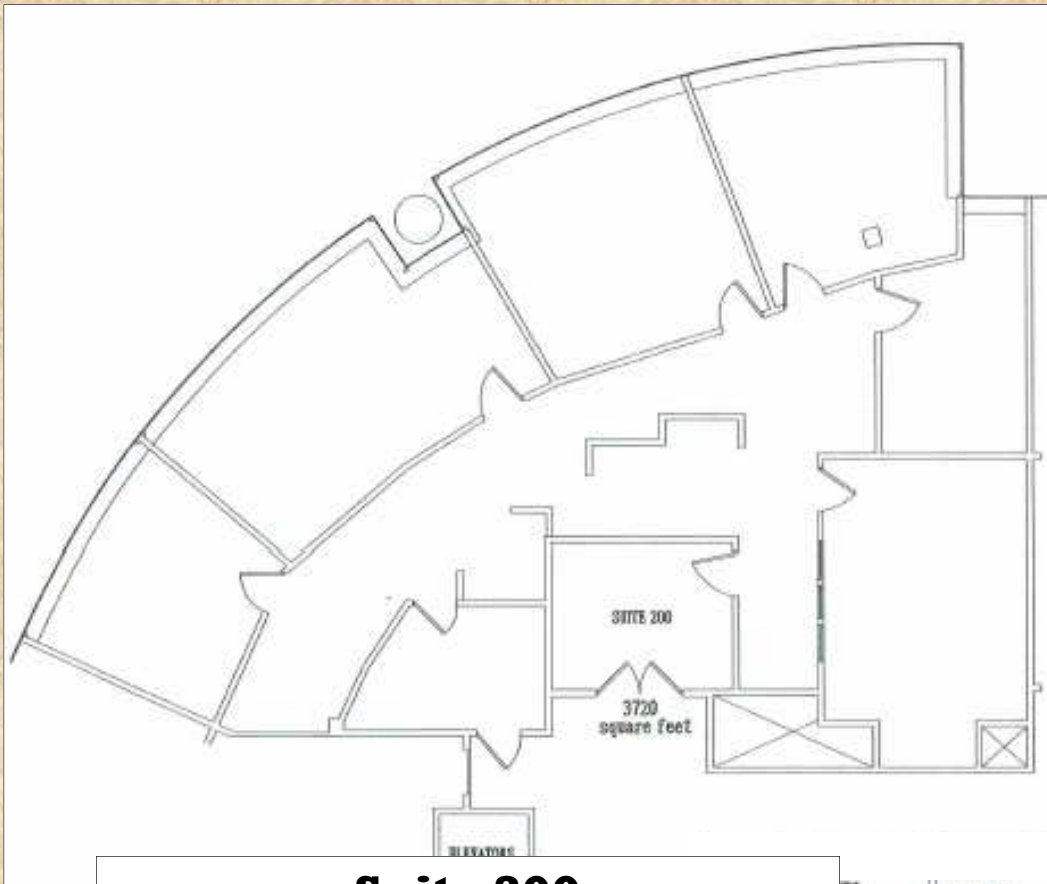
- COMMERCIAL -

- OFFICE -

- MANAGEMENT -

www.metrorealtyservices.com

All information submitted is subject to errors, omissions, change of price or rental, change of other terms and conditions, prior sale, lease, financing or withdrawal without notice.



Suite 200
3,730 Square Feet
 5 Offices—Conference Room— Bullpen—Kitchen
 Excellent Window Line

