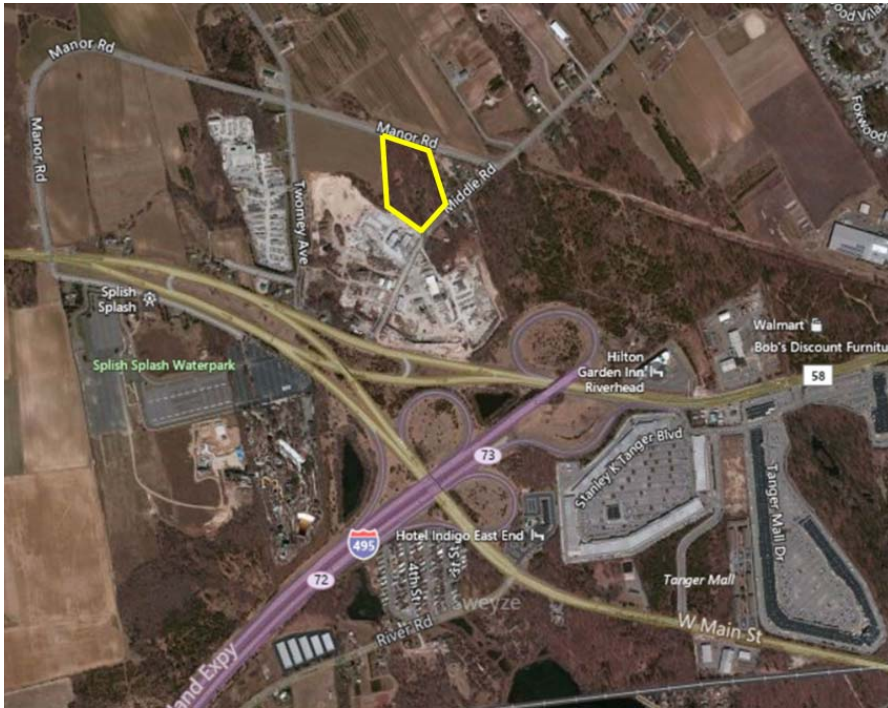


SOLD ~ Industrial Land
1812 Middle Road

(aka 1792 Middle Road) Also Fronts Manor Rd
Calverton, NY 11933



Lot Size: 6.68 Acres
Township: Riverhead
Zoned: Industrial A (IA) [\(click for zoning info\)](#)
Sale Price: Please Call

- Comments:
- ◆ Structures on property include a high end house that can be converted into office and a barn for storage
 - ◆ Can subdivide for multiple lots
 - ◆ 2 street access
 - ◆ Sect 100, Block 2, Lot 4.2

For further information or to arrange an inspection of this property please contact "Exclusive Agent":

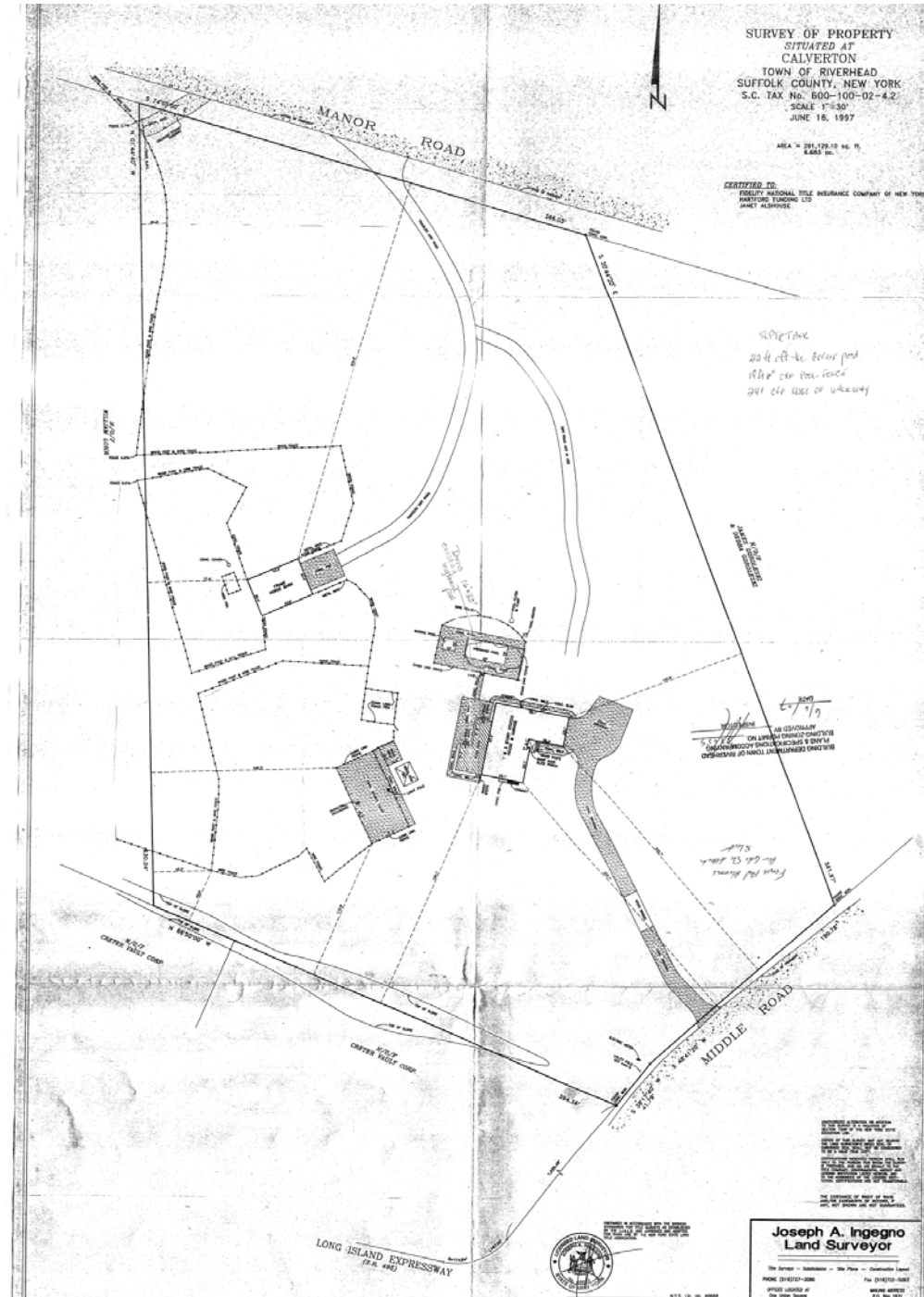
Jeremy D. Hackett, Licensed Real Estate Broker
Managing Partner
Direct: (631) 391-6359
jeremy@metrorealtyservices.com

All information submitted is subject to errors, omissions, change of price or rental, change of other terms and conditions, prior sale, lease, financing or withdrawal without notice. All areas and dimensions are approximate. This advertisement does not suggest that the broker has a listing on this property or properties or that any property is currently available.

Metro Realty Services, LLC
1111 Broadhollow Road, Suite 222, Farmingdale, NY 11735
T (631) 770-0700 ~ F (631) 770-0710
info@metrorealtyservices.com ~ www.metrorealtyservices.com

SOLD ~ Industrial Land
1812 Middle Road

(aka 1792 Middle Road) Also Fronts Manor Rd
Calverton, NY 11933



All information submitted is subject to errors, omissions, change of price or rental, change of other terms and conditions, prior sale, lease, financing or withdrawal without notice. All areas and dimensions are approximate. This advertisement does not suggest that the broker has a listing on this property or properties or that any property is currently available.

Metro Realty Services, LLC
1111 Broadhollow Road, Suite 222, Farmingdale, NY 11735
T (631) 770-0700 ~ F (631) 770-0710
info@metrorealtyservices.com ~ www.metrorealtyservices.com